

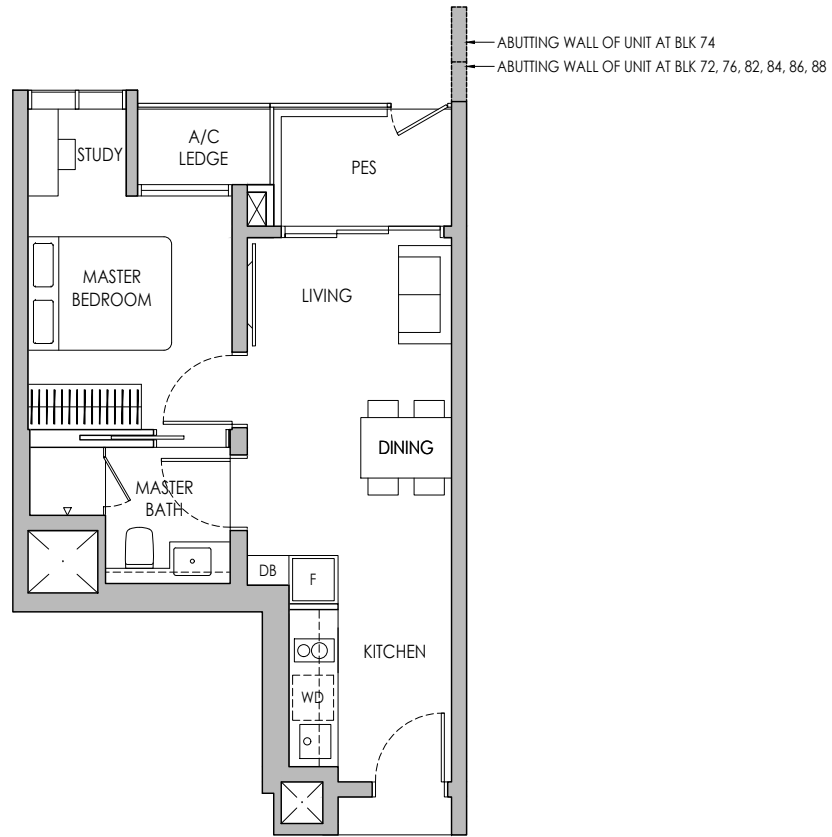
1-BEDROOM + STUDY

DRAFT

Type A1S(p)

44 sq m / 474 sq ft

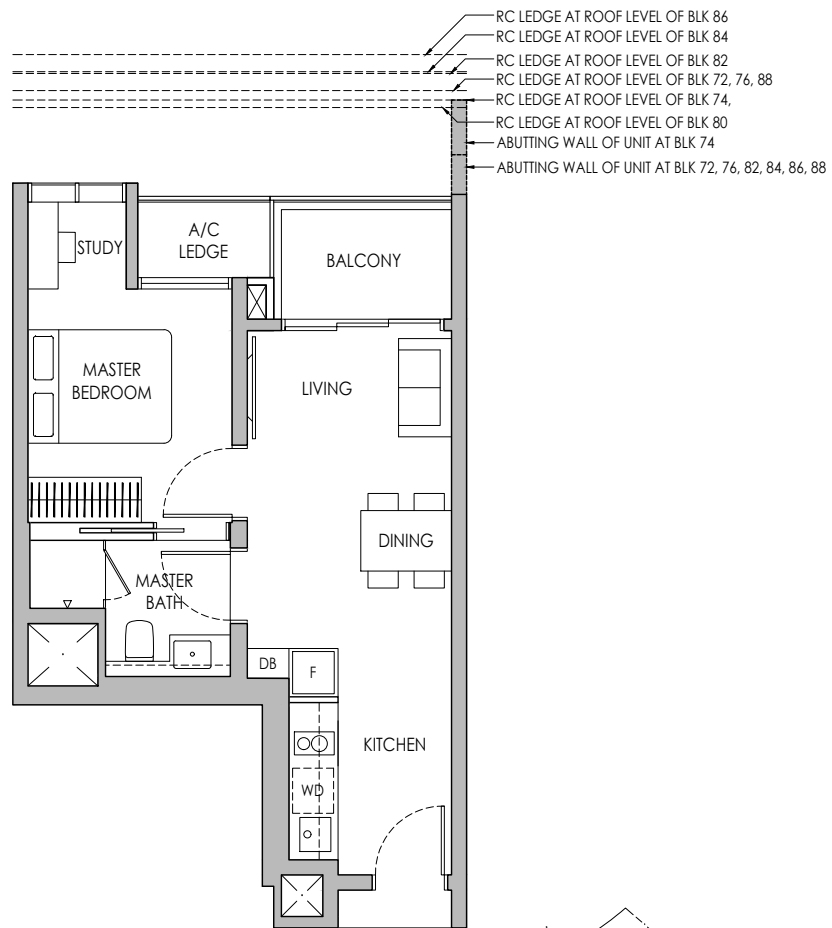
- BLK 72 #04-08*
- BLK 74 #04-09 / #04-16*
- BLK 76 #04-17
- BLK 80 #04-40*
- BLK 82 #04-48*
- BLK 84 #04-56*
- BLK 86 #04-58 / #04-67*
- BLK 88 #04-75*



Type A1S

44 sq m / 474 sq ft

- BLK 72 #05-08* - # 11-08*
- BLK 74 #05-09 - #11-09 / #05-16* - #11-16*
- BLK 76 #05-17 - #12-17
- BLK 80 #05-40* - #13-40*
- BLK 82 #05-48* - #13-48*
- BLK 84 #05-56* - #13-56*
- BLK 86 #05-58 - #13-58 / #05-67* - #13-67*
- BLK 88 #05-75* - #11-75*



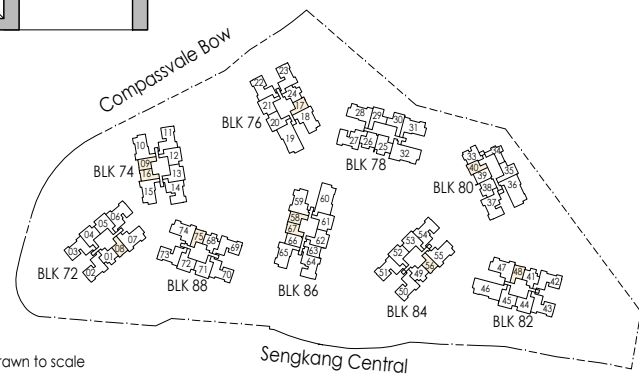
* Mirror Image



Area includes air-con (A/C) ledge, private enclosed space (PES), balcony and strata void area where applicable. Some units are mirror images of the apartment plans shown in the brochure. Please refer to the keyplan for orientation. The plans are subject to change as may be approved by relevant authorities. All floor plans are approximate measurements only and are subject to government re-survey. The balcony shall not be enclosed unless with the approved balcony screen. For an illustration of the approved balcony screen, please refer to the diagram annexed hereto as "Annexure a".



Keyplan is not drawn to scale



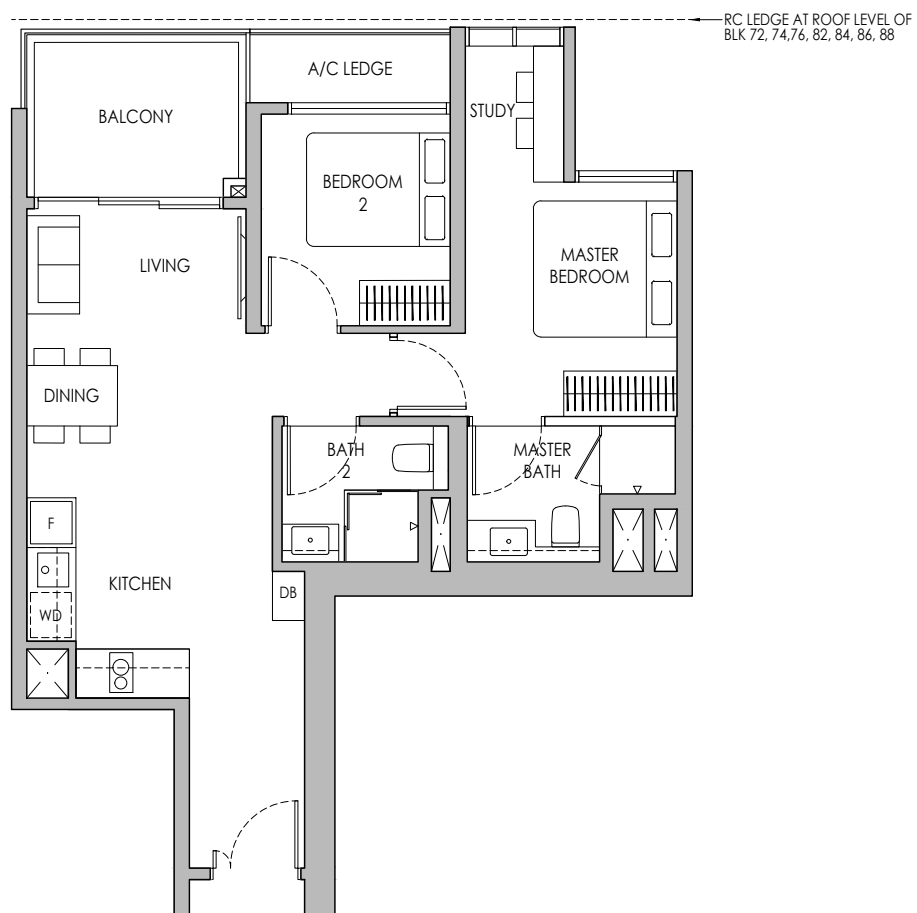
2-BEDROOM PREMIUM + STUDY

DRAFT

Type B5PS

71 sq m / 764 sq ft

- BLK 72 #05-04 - #11-04, #05-05* - #11-05*
- BLK 74 #05-12 - #11-12, #05-13* - #11-13*
- BLK 76 #05-20 - #12-20, #05-21* - #12-21*
- BLK 82 #05-44 - #13-44, #05-45* - #13-45*
- BLK 84 #05-52 - #13-52, #05-53* - #13-53*
- BLK 86 #05-61 - #13-61, #05-62* - #13-62*
- BLK 88 #05-71 - #11-71, #05-72* - #11-72*



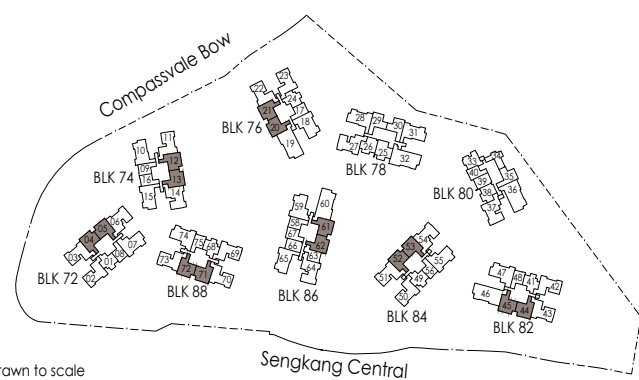
* Mirror Image



Area includes air-con (A/C) ledge, private enclosed space (PES), balcony and strata void area where applicable. Some units are mirror images of the apartment plans shown in the brochure. Please refer to the keyplan for orientation. The plans are subject to change as may be approved by relevant authorities. All floor plans are approximate measurements only and are subject to government re-survey. The balcony shall not be enclosed unless with the approved balcony screen. For an illustration of the approved balcony screen, please refer to the diagram annexed hereto as "Annexure a".



Keyplan is not drawn to scale



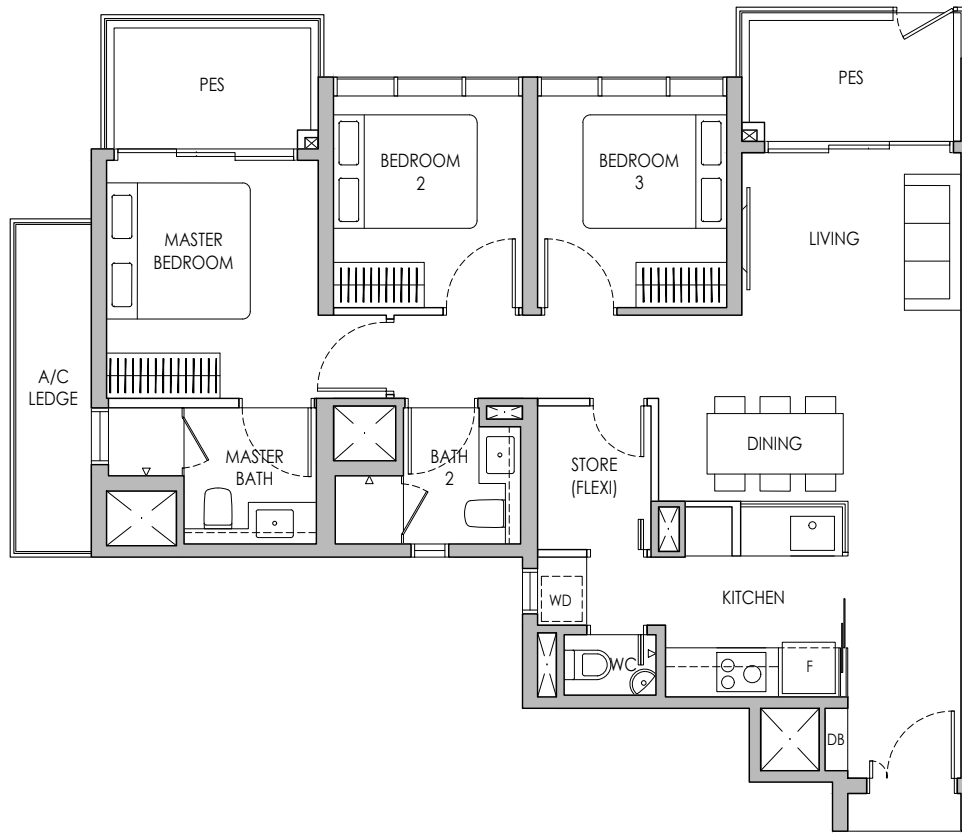
3-BEDROOM PREMIUM + FLEXI

DRAFT

Type C5PF(p)

94 sq m / 1012 sq ft

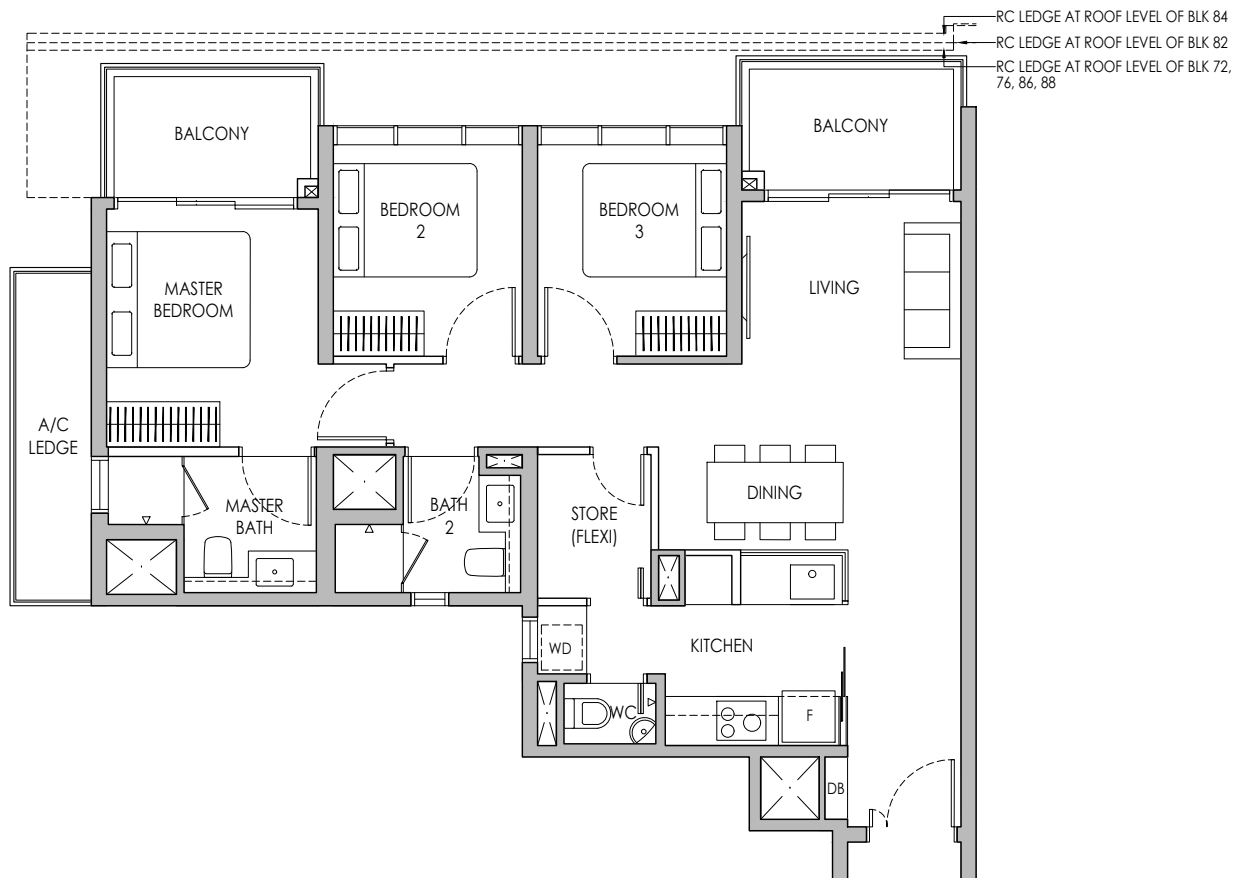
- BLK 72 #04-07
- BLK 76 #04-18*
- BLK 82 #04-47
- BLK 84 #04-55
- BLK 86 #04-59*
- BLK 88 #04-74



Type C5PF

94 sq m / 1012 sq ft

- BLK 72 #05-07 - #11-07
- BLK 76 #05-18* - #12-18*
- BLK 82 #05-47 - #13-47
- BLK 84 #05-55 - #13-55
- BLK 86 #05-59* - #13-59*
- BLK 88 #05-74 - #11-74



* Mirror Image



Area includes air-con (A/C) ledge, private enclosed space (PES), balcony and strata void area where applicable. Some units are mirror images of the apartment plans shown in the brochure. Please refer to the keyplan for orientation. The plans are subject to change as may be approved by relevant authorities. All floor plans are approximate measurements only and are subject to government re-survey. The balcony shall not be enclosed unless with the approved balcony screen. For an illustration of the approved balcony screen, please refer to the diagram annexed hereto as "Annexure a".



Keyplan is not drawn to scale

